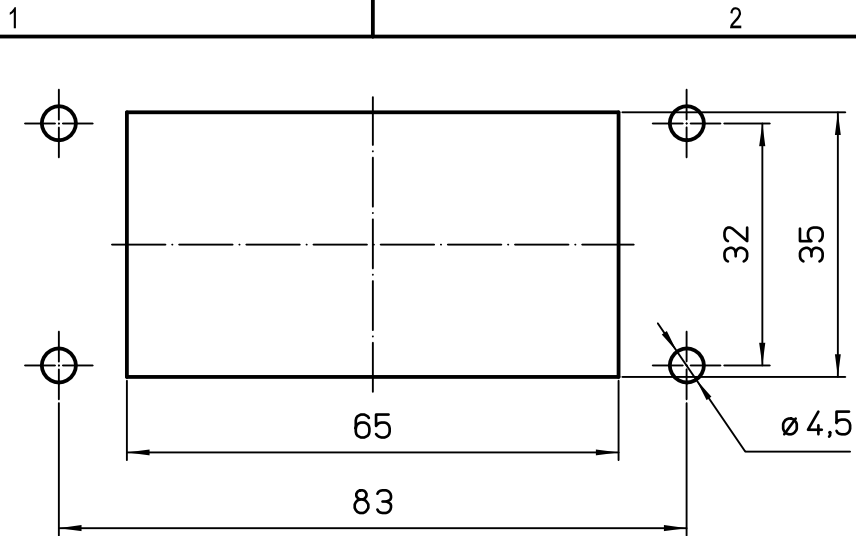
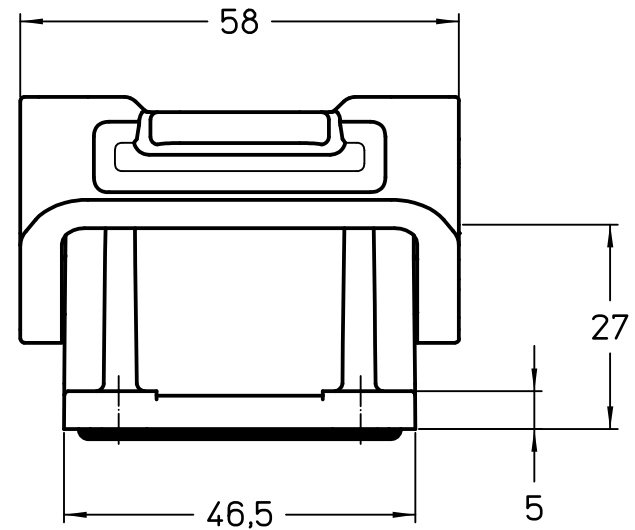
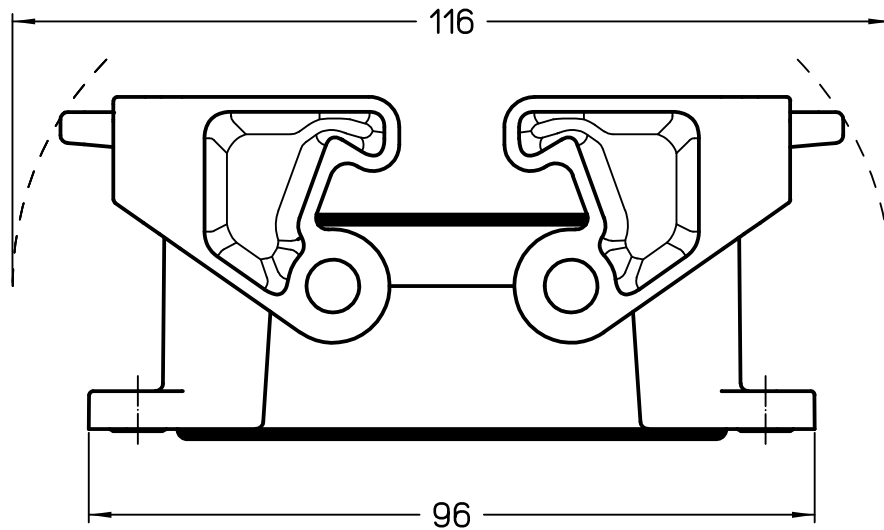
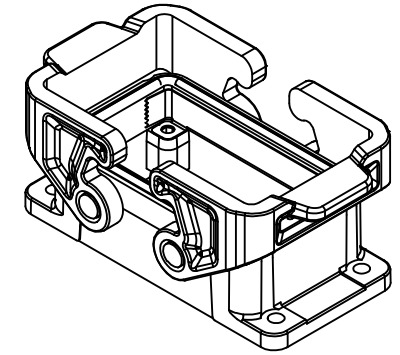



Diritti riservati All rights reserved



Panel cut-out



	Dimensions in mm
Original Size A4	
Date 04/02/22	
Sign. G. Renna	

Simplified representation with dimensions without tolerance

THIC 10 B
Insulating bulkhead mounting housing size "57.27"
with integrated PE jumpers - HYGIENIC-COLD

Scale
1:1

